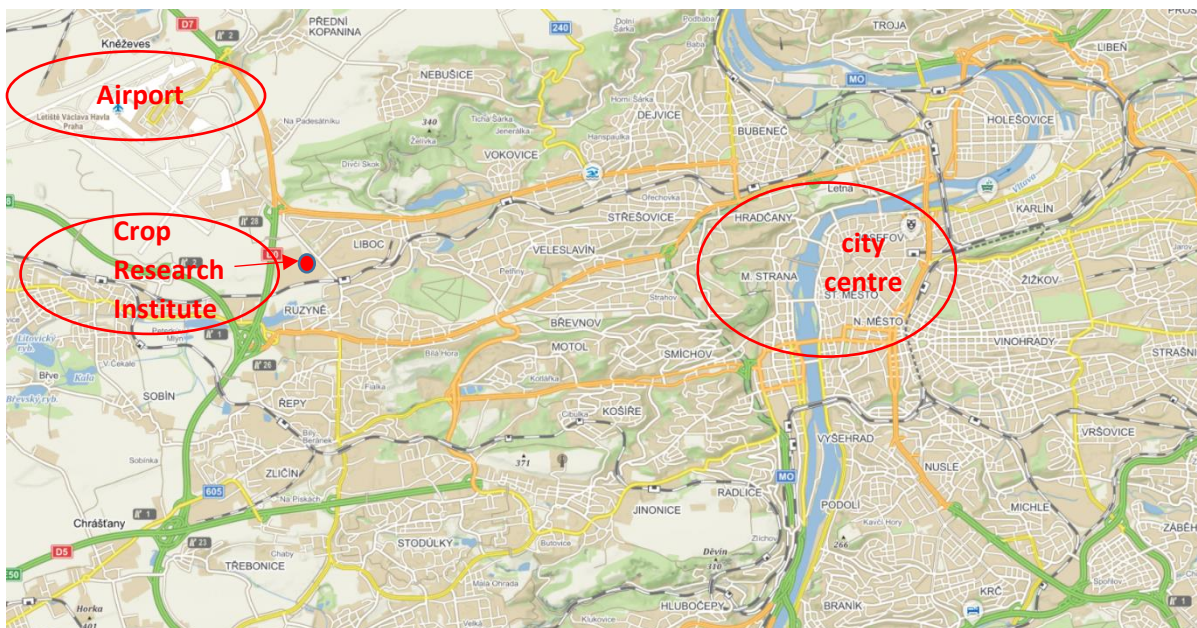


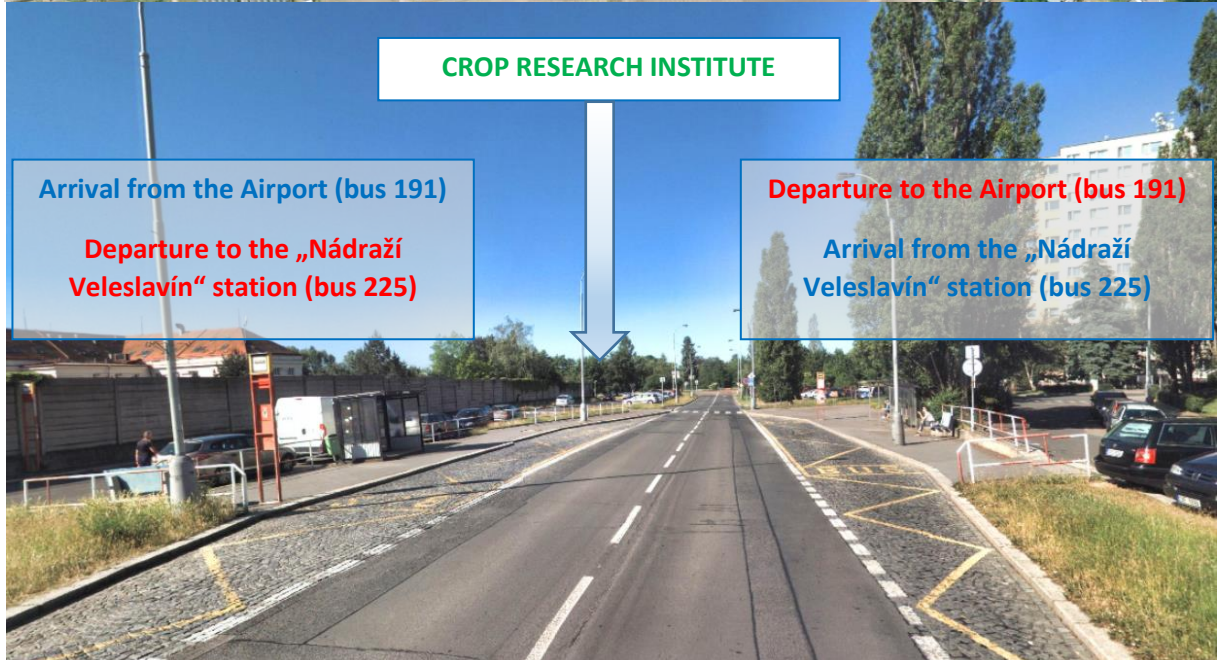
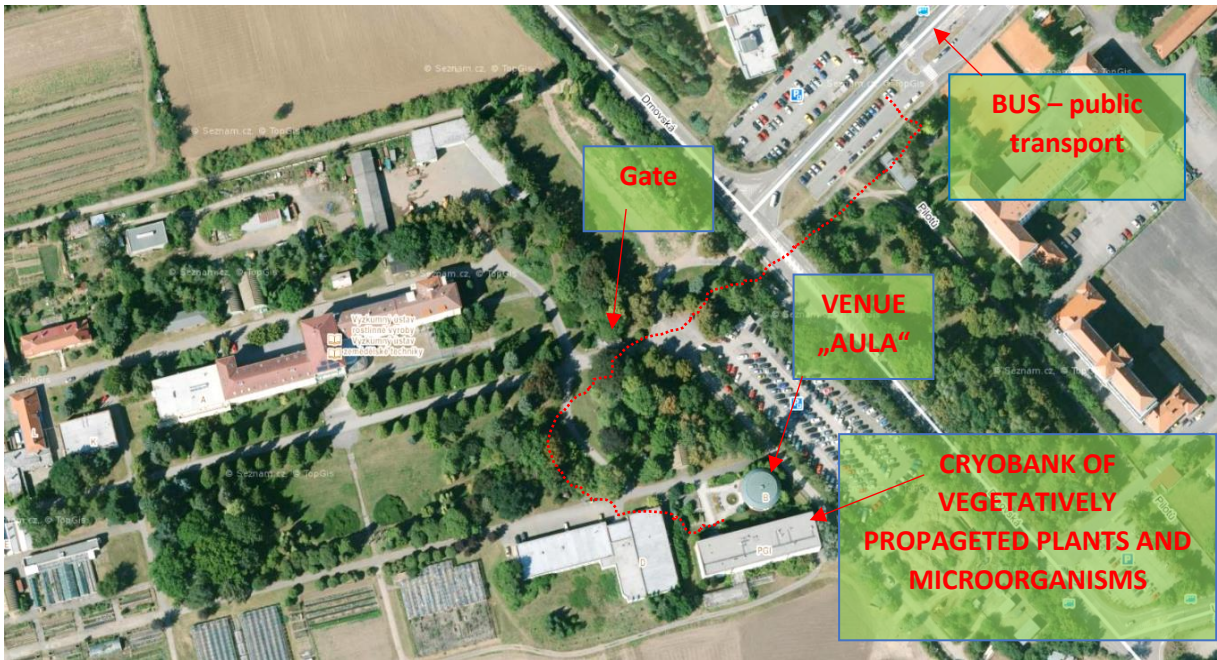
SLTB 2018 PRAGUE



Location

The SLTB meeting will take part at the Crop Research institute, which is located on the west edge of Prague, close to the airport (10 minutes by car). The nearest bus stop “Čiolkovského” is about 5 minutes walking. Address: Crop Research Institute, Drnovská 507, Prague, Czech Republic; the Lecture room –“AULA”.





Getting to Prague

By airplane

Václav Havel Airport Prague is the operator of the most important international airport in the Czech Republic and it offers of almost 70 airlines connecting Prague directly with more than 160 destinations all over the world during the year.

By train

Prague is reachable by train from neighbor countries – Germany, Poland, Austria and Slovakia). A following railway station are directly linked to Prague:

Germany (Dresden, Nurnberg, Regensburg)

Poland (Krakow)

Slovakia (Bratislava)

Austria (Wien)

By car

Prague is reachable by car from neighbor countries – Germany, Poland, Austria and Slovakia). A following international road network can be used but a traffic jam should be expected in some cases due to highway reconstruction:

E50 (from Nurnberg)

E55 (from Dresden)

E55 (from Linz)

E67 (from Wroclaw)

E65 (from Bratislava/ Wien)

Information about Prague public transport

Public transport includes the metro, trams, Prague public transport buses, the Petřín funicular, ferries and selected railway line sections. The institute is reachable by bus from the airport and by metro and bus form city centre.

Metro

The metro network is the backbone of the entire public transit system, with 61 stations on three lines (A - green, B – yellow and C - red) with a total length of 65.2 km. The “Nádraží Veleslavín” (= Veleslavín train station) stop on the metro Line A (Green line) is an important traffic junction to reach either Prague airport or the Crop Research Institute from city centre and vice versa.

Buses

The Public Transit Co. operated 148 bus lines along 829 km of roads.

Trams

The tram network with 142.4 km of track is served by twenty-two daytime and nine night lines with a total route length of 510.4 km.

Fares in Prague

The tariffs for the Prague city area are divided into Zones P and O (in total, there are 4 tariff zones for the Prague area). Zone P has a doubled tariff value and Zone O is divided into Zones O and B – the border stops zone.

Zone P includes the metro, trams, Prague public transport buses (lines No's 100 – 299 and 901 – 915), the Petřín funicular, ferries and selected railway line sections.

Zone O includes buses from the periphery areas (lines No's 300 – 420 and 951 – 960) running through the Prague area, and selected railway line sections.

Ticket type/validity/price*:

Basic ⁺	90min.	32 CZK
Short-term	30min.	24 CZK
1 day	24hours	110 CZK
3 days	72hours	310 CZK

*the price are valid for Zone P

+the basic ticket is usually sufficient for one way from city centre to the institute

Where to buy tickets?

Transit ticket vending machines

Ticket vending machines are installed in all metro stations and at selected surface transit stops. They are intended for the purchase of individual tickets.

Info centres

Information centres sell individual tickets and short-term (tourist) passes.

Tobacconists and wholesalers

Selected tobacconists and wholesalers sell individual tickets.

More information about the Prague public transport at web pages: <http://www.dpp.cz/en/>



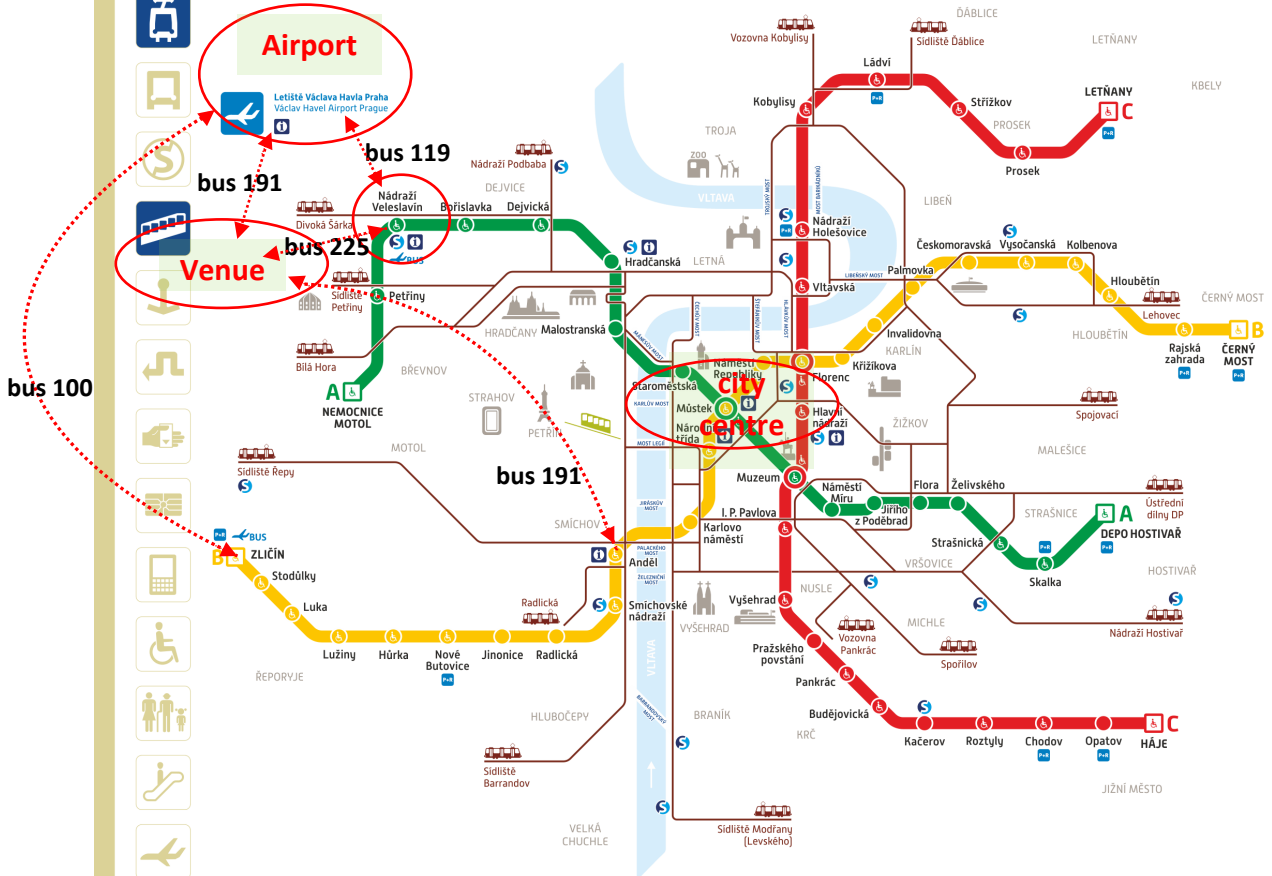
Metro map



PRAHA PRAGUE

Orientační plán metra

Metro map



A B C Linky a stanice metra
Metro lines and stations

♿ Bezbariérový přístup
Barrier-free access

bus Bus MHD na Letišti Václava Havla Praha
Public transport buses to Václav Havel Airport Prague

P+R Parkoviště P+R
Park and ride

C Konečná stanice metra
Metro terminus station

Tram Tramvajová trať
Tram line

S Přestup na linky S a další vlakové spoje
Transfer to lines S and other railway lines

i Infocentrum DP
Public transport information

Transfer Stanice přestupní
Transfer station

Lan Lanová dráha
Funicular

© Dopravní podnik hl. m. Prahy, akciová společnost prosinec 2016

296 19 18 17
www.dpp.cz



Metro map - detail



PRAHA

PRAGU



Orientační plán metra

Metro map



bus 100

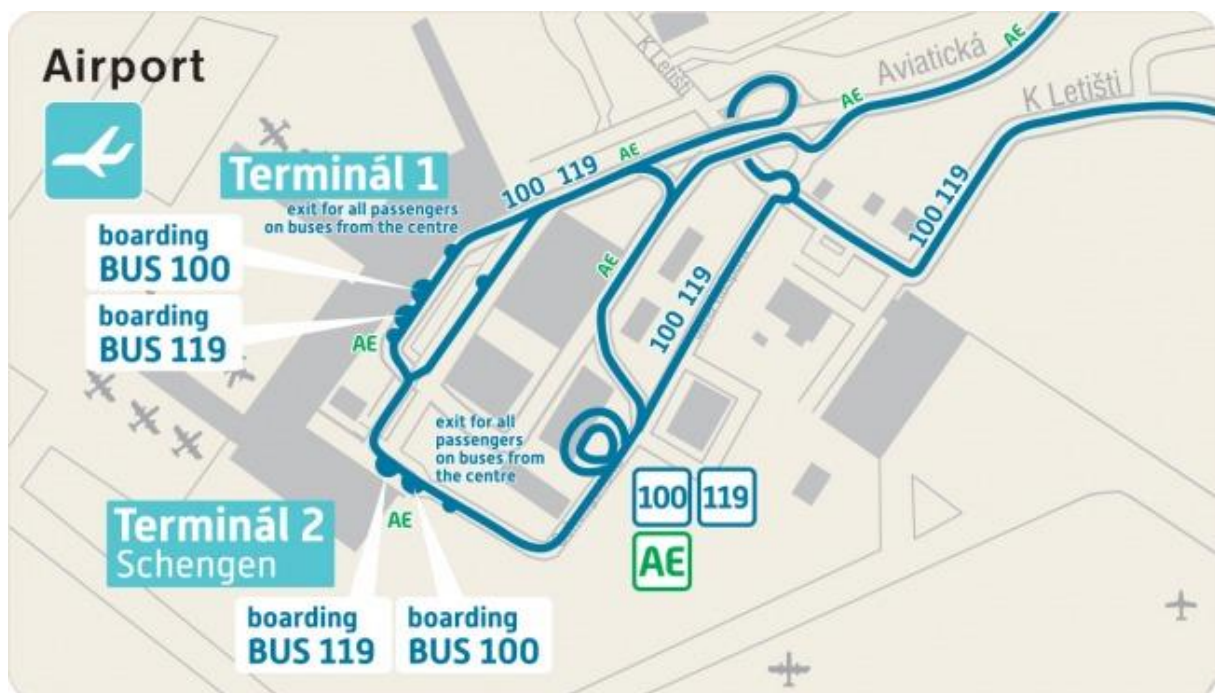


Public transport from Prague airport to city centre

The connection between Václav Havel Airport Prague and Prague city centre is provided by public transport bus lines, which operate at regular few-minute intervals. Bus stops are located directly in front of terminals.

To get to Prague city centre the fastest by public transport, we recommend taking the 119 bus (Prague Airport – “Nádraží Veveslavín”) and changing to metro Line A.

Public transport bus rides are subject to regular Prague Public Transport Fares; pre-paid passes and time cards apply. Bus rides do not need to be booked in advance. Passengers without pre-paid passes or time cards must purchase a ticket before boarding the bus from a ticket machine or the Prague Public Transit company (DPP) counter. Ticket machines are located directly at bus stops and around arrival halls. Prague Airport is not the provider of the service.



119 Bus Line

Direction: “Divoká Šárka” – “Nádraží Veveslavín”

Travel Time: approx. 15 minutes

Change to Metro Line A at “Nádraží Veveslavín” stop

191 Bus Line

Direction: “Divoká Šárka” – “Petřiny” – “Anděl”

Travel Time: approx. 50 minutes

Changes to Metro Line A (“Petřiny”) and Metro Line B (“Anděl”)

100 Bus Line

Direction: “Zličín”

Travel Time: approx. 18 minutes

Change to Metro Line B (“Zličín”)

910 Night Bus Line

Direction: "I.P. Pavlova" – "Kačerov" – "Modřany"

Travel Time: approx. 80 minutes

Night service only (0:00 – 4:00 am)

Public transport from Airport to the Crop Research Institute

191 Bus line – direct connection; get off at "Ciolkovského" bus stop

119 Bus line from airport to bus stop "Divoká Šárka"; cross the street and use the bus stop on the opposite side of the street; take bus line 191 or 225; get off at "Ciolkovského" bus stop

Travel Time: approx. 13-23 minutes

Public transport from city centre to the Crop Research Institute

To get to the Crop Research Institute the fastest by public transport, we recommend taking metro Line A, changing to the 225 bus ("Nádraží Veveřská") and getting off at "Ciolkovského" bus stop. In case you accommodate close to Line B (yellow), we recommended taking the Line B, changing to the bus 225 ("Stodůlky") and getting off at "Ciolkovského" bus stop.

Travel Time: approx. 30-40 minutes

Taxi Service form airport

Use the airport partner FIX TAXI and Taxi Praha taxi service providers for getting to/from the airport. They operate nonstop at guaranteed prices, based on number of kilometers travelled.

Sales counters of taxi service providers are located at the Terminals 1 and 2 Arrival Halls. Boarding points are clearly marked in front of both Arrival Halls.

Contacts:

FIX TAXI

+420 220 113 892; +420 220 117 078

+420 722 555 525

fix@airportcars.cz

<http://www.airportcars.cz>

Taxi Praha

+420 220 414 414

airport@taxi14007.cz

<http://www.taxi14007.cz>

Accommodation

Walking distance hotels/hostels

1) Hotel Meritum***

It is the best choice because of quality and distance from our institute but only limited number of room will be available probable in this time.

2) Sporthotel & Ubytovna Scandinavia**

That is a very cheap and simple accommodation. We would recommend it just for students with a very low demands. The location is very good, close to the institute.

3) Sky Hotel Prague ****

This hotel (or hostel) is of slightly better quality then the previous. Original name was Sport, later Port, now probably Sky (I have not known that.)

4) Pension Paldus***

We have no personal experience with this pension but it looks OK.

5) Vila St Tropez****

We had little experience with this hotel but many years ago. I think that it is also acceptable.

6) Penzion Vetrny mlyn***

It is just cross the street from "Vila St Tropez". In past, we had some experience with accommodation of young foreign scientists visited our institute.

Other accommodation

Besides the city centre hotels, we recommend a selection of such that are **close to the metro Line A** (Green), for example:

7) Vienna House Diplomat Prague *****

High quality but more expensive.

Hotels in location called "Smíchov" (Prague 5) - this location is quite close to the city centre or the Prague castle, but in this case, it is better to take a **metro Line B** (yellow) or bus 191, hotel examples:

8) APARTHOTEL Austria Suites***

9) Ibis Praha Malá Strana***

10) NH Prague City****

11) Vienna House Andel's Prague****

12) Akcent hotel ***

Checking the current hotel quality at the Booking.com, travel advisor etc. is recommended.